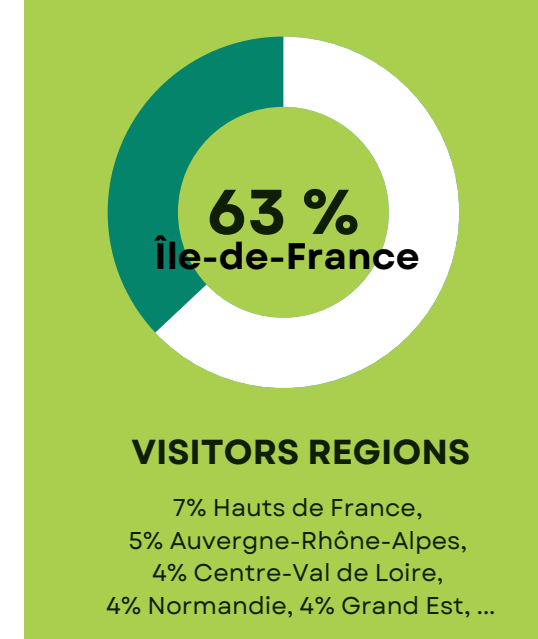
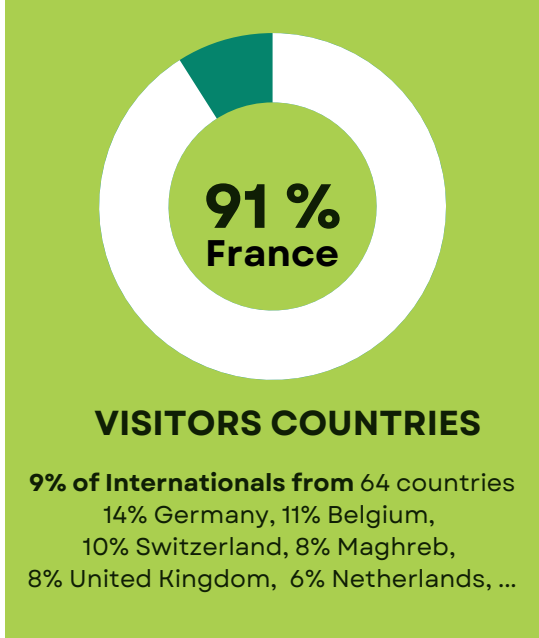
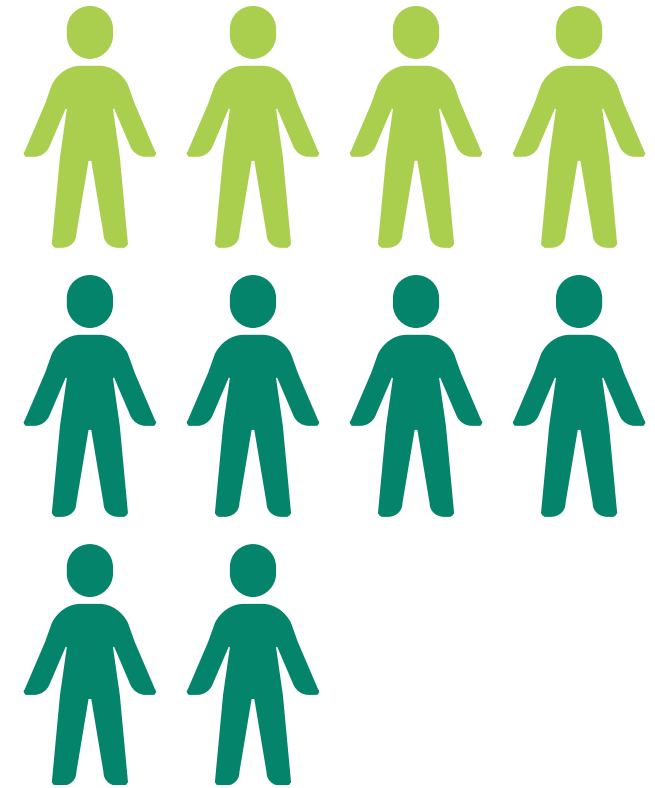


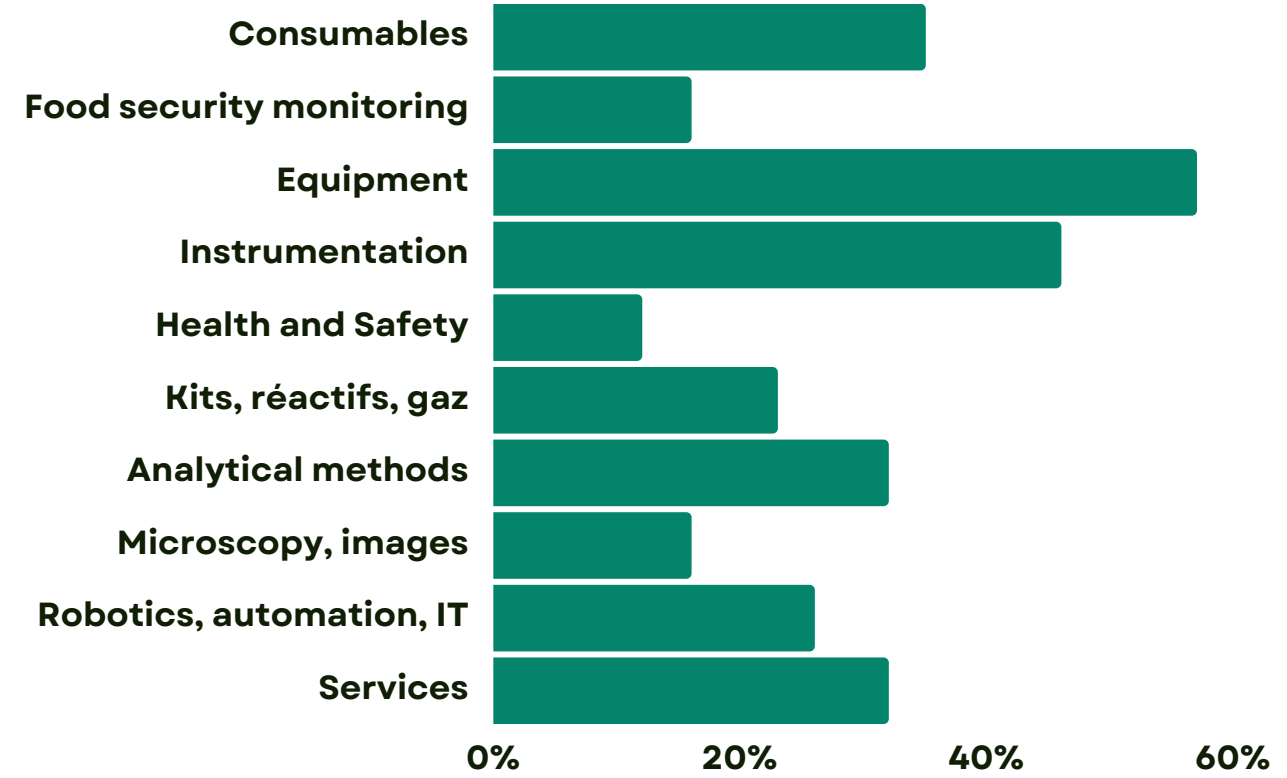
The results were positive, and the indicators were up on the previous edition in Paris. With 330 exhibitors (up 25%) and 5,818 visitors (up 7%), despite the impact of a transport strike on the first day, Forum LABO PARIS stood out for the quality of its visitors and its business climate, as demonstrated by the 776 Lab'Meetings business meetings held (up 27%) between exhibitors and key players in the sector.

5 818 visitors



A COMPLETE OFFER FOR RESEARCH, ANALYSIS, CONTROL AND PROCESS

330 exhibitors including 152 CIFL members



Robotic Village

Solutions and applications in automation, robotics and laboratory instrumentation.

- AZENTA LIFE SCIENCES
- BIOBANK LARIBOISIÈRE
- EKIU
- ELRIGfr
- INOREVIA
- IZIBIO Tech
- MICROTECHNIX
- STANDARD BIOTOOLS
- TITIAN SOFTWARE
- XPERT AUTOMATION
- ZIATH

Food Security Village

Solutions and methods in food microbiology.

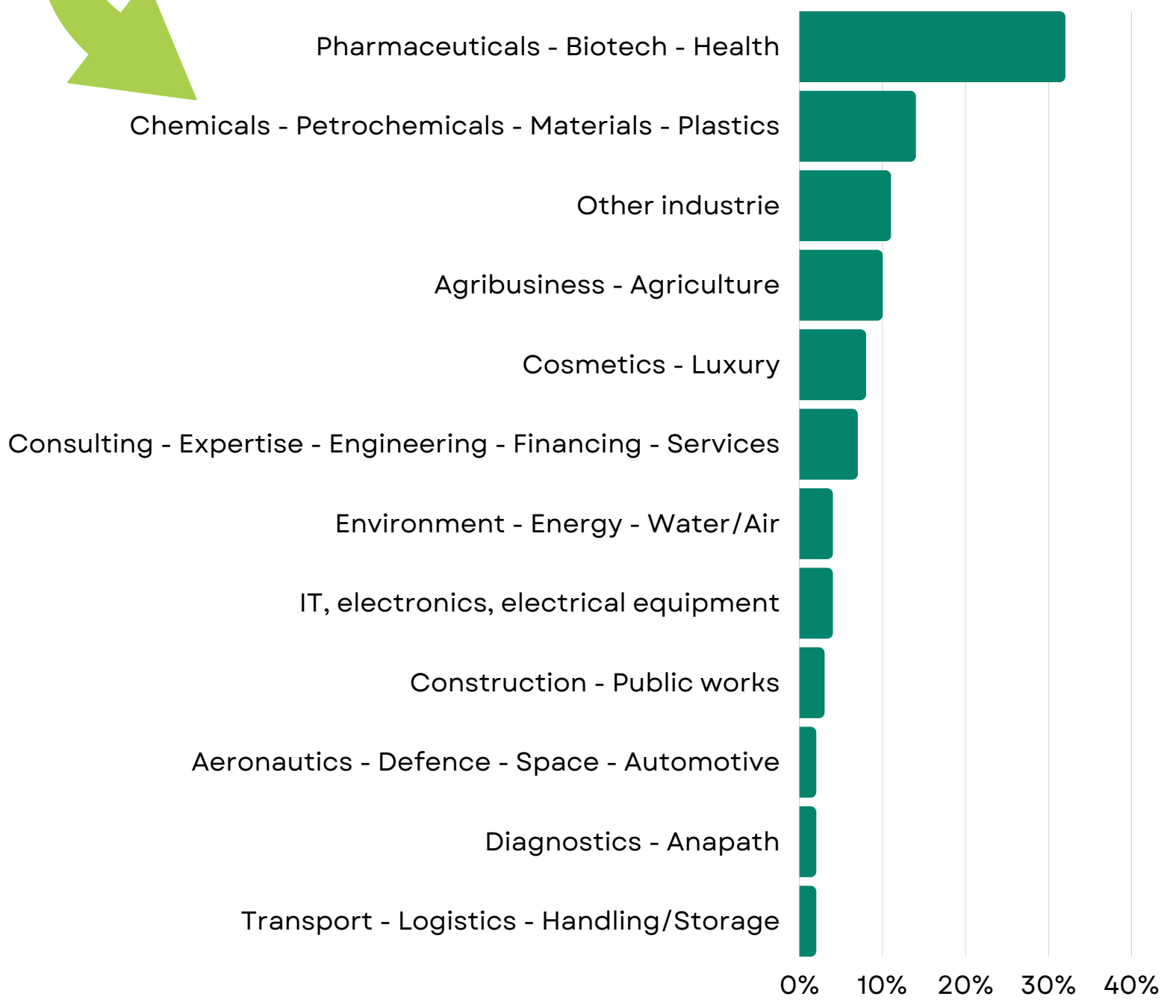
- BENTLEY INSTRUMENTS
- BIO-RAD FOOD SCIENCE
- BIOMERIEUX
- EURALAM EUROPROBE
- HYGIENA
- NEOGEN
- SODIBOX
- SYFT TECHNOLOGIES

78% Visitors report having achieved their primary visit objectives

- | | |
|---|--|
| 1 Discover market innovations, trends and developments | 3 Meet your usual suppliers
Find new suppliers |
| 2 Prepare a purchase or investment | 4 Meet and reference new suppliers |

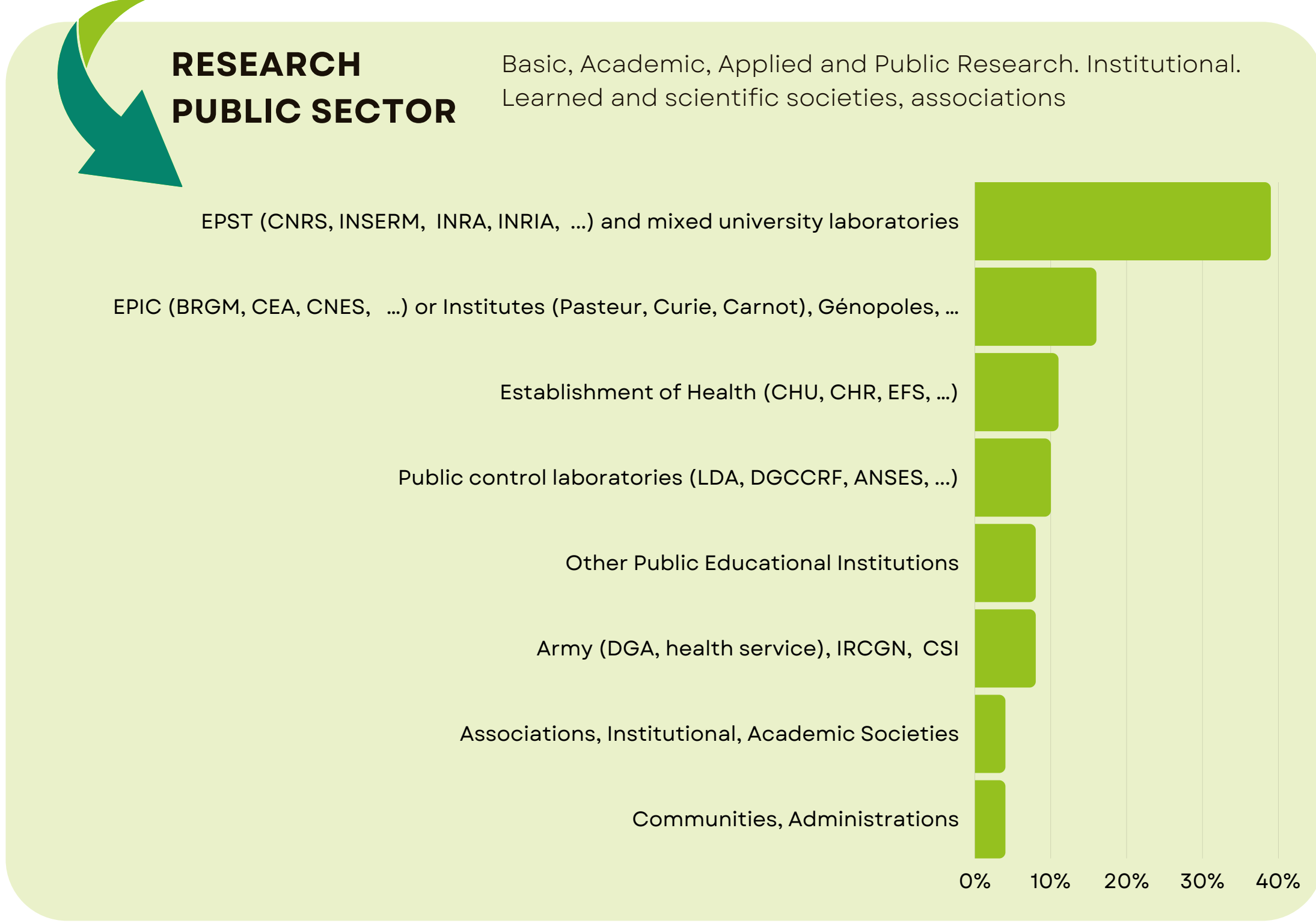
Research PRIVATE SECTOR

Industry, Private research, Control, Quality, Analysis, Process, Consulting



RESEARCH PUBLIC SECTOR

Basic, Academic, Applied and Public Research. Institutional. Learned and scientific societies, associations



A PROGRAMME COMBINING SCIENTIFIC KNOWLEDGE AND GOOD PRACTICE

21 Scientific conferences

998 participants (including 282 from the **SEP Congress of Separative Sciences**)

13 Exhibitor Workshops

255 participants



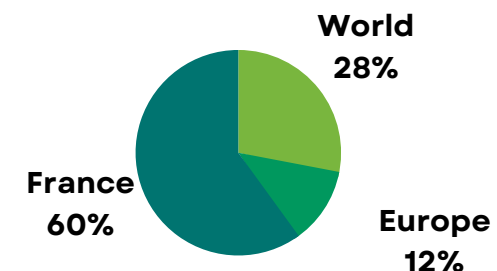
Themes that aroused keen interest ...

- Laboratory automation - ELRIG
- Research and innovation: Biochemistry and Molecular Biology at the heart of the challenges facing biology - SFBBM
- Good measurement practice in the laboratory - Collège Français de Métrologie
- Chemistry, Biochemistry and Artificial Intelligence: A New Era for the Laboratory of the Future - SECF
- Laboratory performance: Building indicators to analyse it - SPC
- Single-cell RNA-seq, from cell suspension to publication-ready data - OZYME
- Theory Potentiometric titration and how to improve titration accuracy - METROHM

THE INNOVATION PROGRAMME

90 NEW PRODUCTS

including 60 previews



LAB'START-UP AREA

10 young shoots with high potential:

- **Arrandi** > SaaS platform
- **Centiloc** > Inventory and liquid levels
- **DI2D** > Document digitisation
- **DNTech** > Bacteria detection
- **Ecométrie** > Micropollutants in water
- **Gensensor** > Biological production monitoring
- **Le Labo Durable** > Energy and water consumption
- **Loop dee Science** > Gene amplification
- **Lumetis** > Imaging and spectroscopy
- **Rosachem** > Management platform



INNOVATION AWARDS & FRENCH START-UP PRIZE

Sciences de la vie, santé avec les nouvelles thérapies, notion de durabilité et d'impact sur l'environnement, digitalisation et intelligence artificielle ont caractérisé ce millésime.

Highlighting the major innovations that will shape the laboratory of tomorrow.

6 winners (Categories: Instrumentation, Equipment, Consumables/Reagents/Kits, IT, Services + French Start-up Prize) and 1 special mention:

- **CHEMLYS**
- **GENSENSOR**
- **GREINER BIO ONE**
- **LE LABO DURABLE (one special mention)**
- **METTLER TOLEDO**
- **NEW ENGLAND BIOLABS**
- **TRIONYX**

Life sciences, health with new therapies, the notion of sustainability and impact on the environment, digitalisation and artificial intelligence were the hallmarks of this vintage.

EDUCATION & EMPLOYMENT AREA

EDUCATION

Careers and opportunities in scientific fields, with jobseekers looking for employment, training or advice being put in touch with recruiting exhibitors or partners.

- **ESTA BELFORT SCHOOL OF TECHNOLOGY AND BUSINESS**
- **ESTBA PARIS**
- **IUT D'ORSAY - UNIVERSITY PARIS-SACLAY**
- **MASTER 2 "ITECHNICAL & COMMERCIAL ENGINEERING" CY CERGY PARIS UNIVERSITÉ**
- **MBA FORENSIQUE - JUDICIAL CENTRE OF THE NATIONAL GENDARMERIE**
- **SUP'BIOTECH**
- **UNIVERSITÉ GRENOBLE ALPES - BIOTECHCO CHEMTECHCO SCIENCE TRADING**

EMPLOYMENT

The mission of the **Association Bernard Gregory (ABG)** is to bring the worlds of business and academia closer together by facilitating the professional mobility of PhDs and assisting companies in their recruitment.

APEC helps to bring executives and companies together. It offers a range of services and advice. It assists executives and young graduates in their job search and helps them with the various steps involved.

76%
visitors
satisfied
of their visit

